

e-Falah Trade Terminal User Guide

For download e-Falah Trade Terminal

Visit www.alfalahsec.com

Step1. Click download option

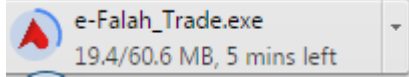


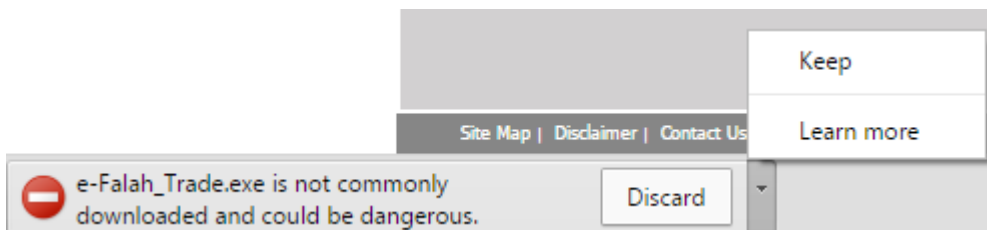
Step2. Click AFS Eclipse Terminal

Index Level	Current	Chg.
KSE 100	32,880	-0.1%
KSE 30	19,080	-0.3%
KMI 30	57,623	0.0%

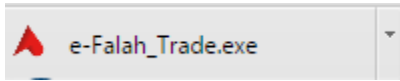
Activity Vol mn	Current	Chg.
KSE 100	67.5	34.5%
KSE 30	42.9	44.3%
KSE All	130.5	51.1%

Trading Terminal	Download	Size
Trading Terminal Manual	Download	1.1 MB
AFS Eclipse Terminal	Download	60.58 MB
AFS Eclipse User Manual	Download	-
AFS Trading Terminal	Download	17.79 MB

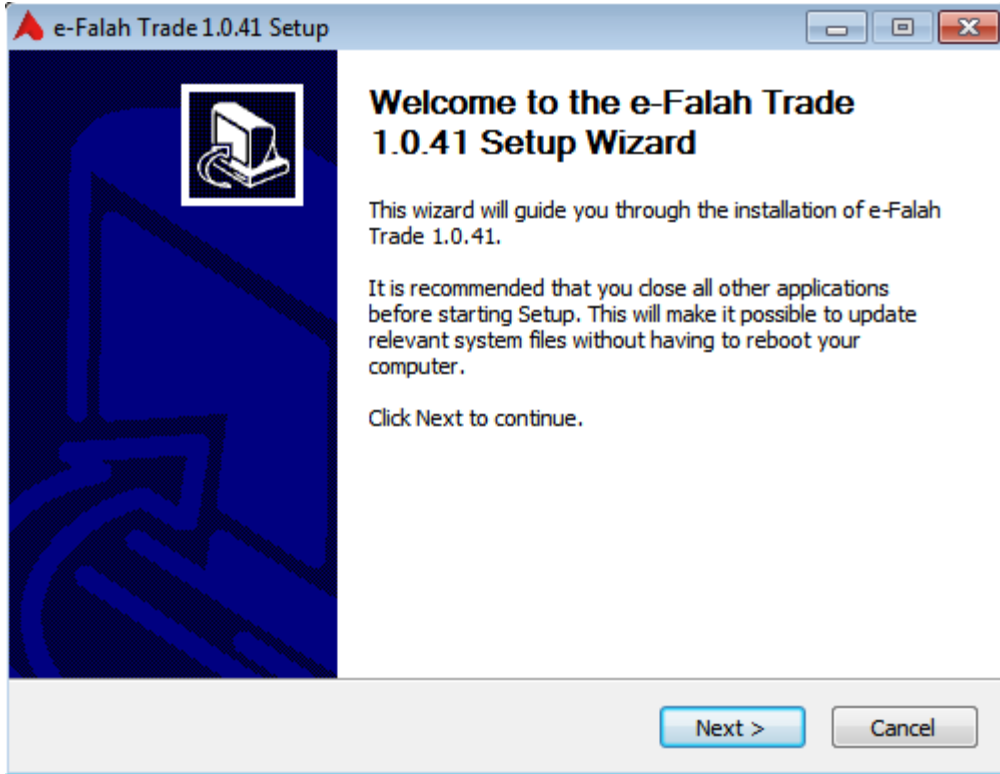
Step3. Click AFS Eclipse Terminal, you can see this icon  at your system task bar at right position after completing the process, click at keep option to save file.



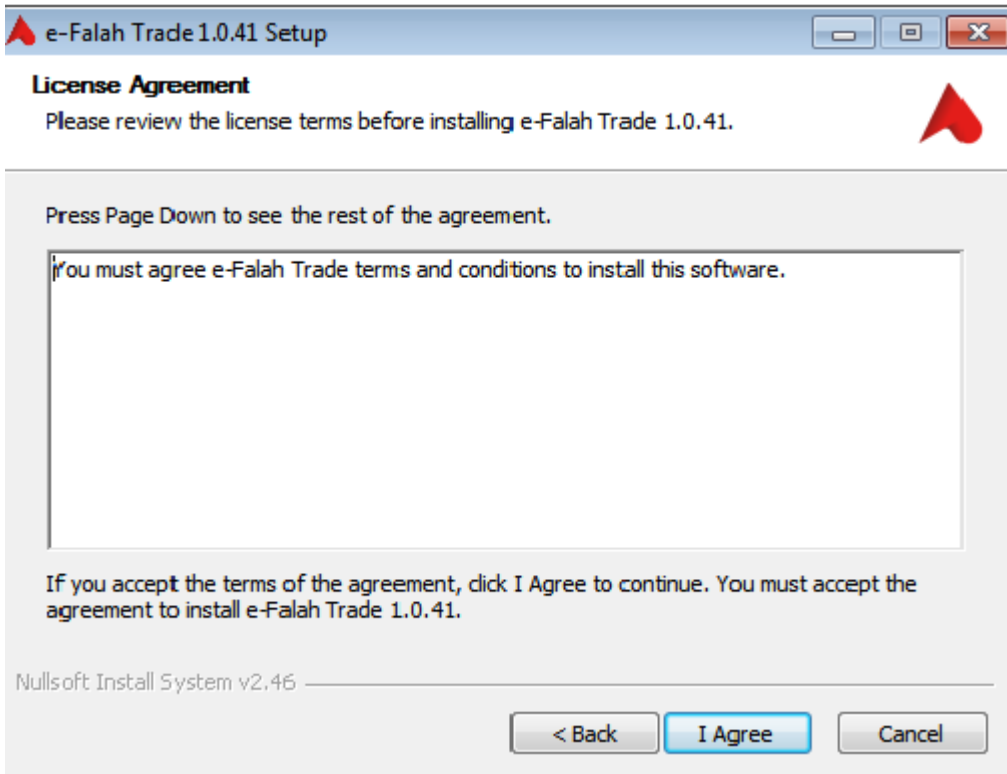
Step4. Click



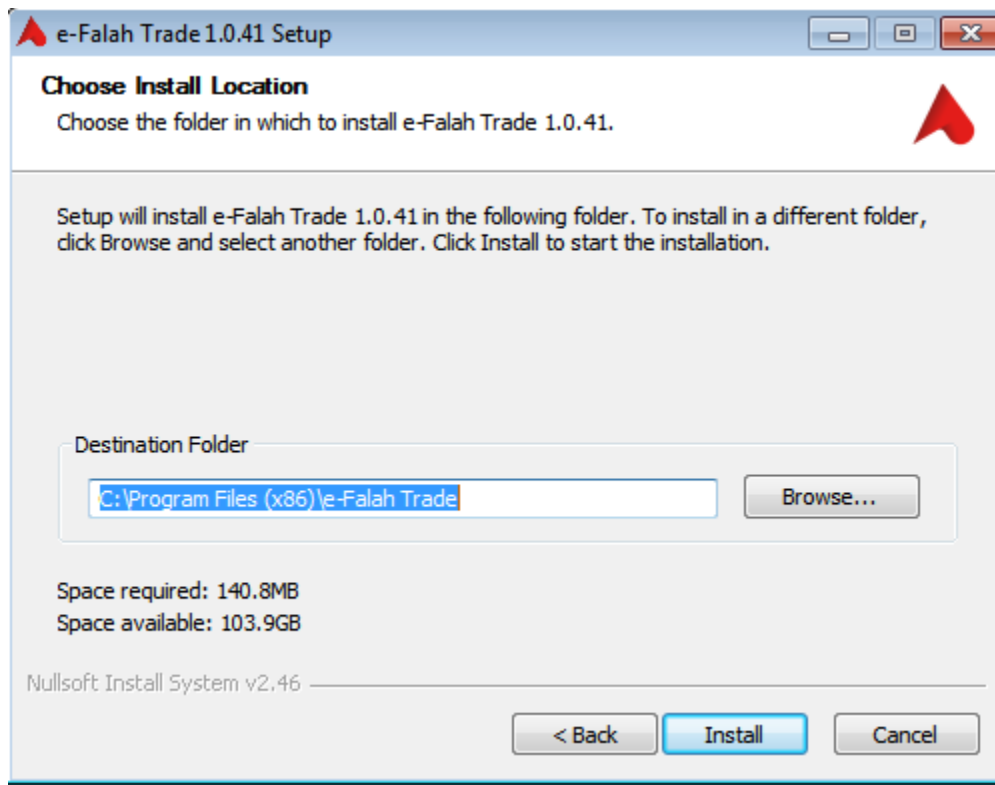
Step5. Click Next



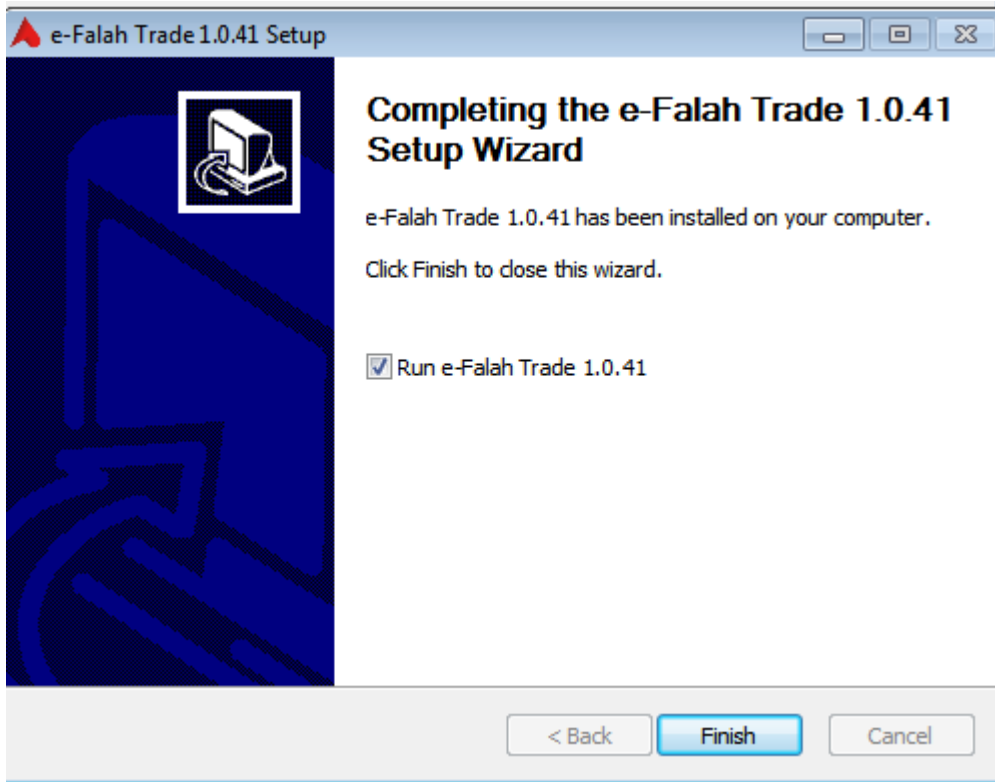
Step6. Click I Agree to continue installation



Step7. Click Install



Step8. Click Finish



e-Falah Trade icon will be appear at your system desktop

Click at e-Falah Trade icon



Login Screen

A screenshot of a 'Server Login' dialog box from 'Alfalsh Securities'. The window title is 'Alfalsh Securities' with a red triangle icon and a close button. The main title is 'Server Login' with a key icon. Below the title is the instruction 'Please enter your User Id and Password'. The form contains three input fields: 'User Id:', 'Password:', and 'Server:'. The 'Server:' dropdown menu is set to 'Primary'. There is a 'Remember Me' checkbox which is currently unchecked. At the bottom, there are 'OK' and 'Cancel' buttons.

Alfalsh Securities

Server Login

Please enter your User Id and Password

User Id:

Password:

Server:

Remember Me

OK Cancel

Now you can enter user Id & Password that have been sent at your registered email.